



AGSS

Ajman General Services & Supplies CO.LLC.
(A Subsidiary of Mol Techno - Trade Ltd. Japan)
P.O. Box: 688, Ajman, U.A.E
Tel: +971 6 74 22 133, Fax: +971 6 74 29 770
Email: marketing@agssuae.ae
www.agssuae.com



YUDE AZUKI (BOILED RED BEAN)
Code : CA008A
Packing : 210 GMS



TOFU SOFT (SOY BEAN CURD)
Code : DR018
Packing : 297 GMS



TOFU FIRM (SOY BEAN CURD)
Code : DR018A
Packing : 297 GMS



INARI (FRIED BEAN CURD)
Code : CA022A
Packing : 240 GMS



SHIRATAKI (YAM THREAD)
Code : CA017
Packing : 200 GMS



SENCHA (GREEN TEA) BAG
Code : DR001B
Packing : 2x25 GMS



MACHA (GREEN TEA POWDER)
Code : DR001A
Packing : 30 GMS



SENCHA (GREEN TEA)
Code : DR0001, DR001C
Packing : 100 GMS, 1 Kg



DASHI KONBU
Code : DR011D, DR011A
Packing : 1 KG, 50 GMS



NORI (SEAWEED WRAPPER)
Code : DR005B, DR005E
Packing : 25 GMS, 300 GMS



WAKAME SEAWEED
Code : DR010B, DR010, DR010A
Packing : 200 GMS, 18 GMS, 500 GMS



KAISO SALAD
Code : DR027
Packing : 100 GMS



FURIKAKE NORITAMA
(RICE SEASONING)
Code : DR008
Packing : 30 GMS



SHITAKE MUSHROOM
Code : DR013A, DR013
Packing : 1 KG, 500 GMS



MIDORI NO TANUKI SOBA
Code : ND019
Packing : 100 Gms



AKAI KITSUNE UDON
Code : ND023
Packing : 90Gms



CHA SOBA (GREEN TEA NOODLE)
Code : ND002
Packing : 200 GMS



SOBA NOODLE (BUCKWHEAT NOODLE)
Code : ND003A
Packing : 200 GMS



SOU MEN NOODLE
Code : ND005A
Packing : 220 GMS



DRY UDON NOODLE
Code : ND001A, DR001
Packing : 250 GMS, 340 GMS



PARIKKO (CUCUMBER PICKLE)
Code : PV13
Packing : 1 KG



UMEBOSHI (PICKLED PLUM)
Code : PV002
Packing : 350 GMS



BENI SHOUGA (RED GINGER PICKLE)
Code : PV004A
Packing : 1 KG



SHIBA ZUKE (MIX VEG PICKLE)
Code : PV008B, PV008C
Packing : 1 Kg, 1 Kg



TAKUWAN (RADISH PICKLE)
Code : PV017, PV017B
Packing : 500 GMS, 350 GMS



GARI SHOUGA (PICKLED GINGER)
Code : PV005A, PV005B (White Gari)
Packing : 1 KG, 1 KG



FUKUIN ZUKE (MIX PICKLE)
Code : PV023
Packing : 1 KG



KANPYO (DRIED GOURD SHAVINGS)
Code : DR020
Packing : 1 Kg



OKASAN MISO (SOY BEAN PASTE)
Code : SS001
Packing : 1 KG



SAIKYO SHIRO MISO
Code : SS001A
Packing : 1 KG



INAKA MISO (RED SOYBEAN PASTE)
Code : SS002A
Packing : 1 Kg



SHIRO MISO (SOYBEAN PASTE)
Code : SS003
Packing : 20 Kg



KIKKOMAN SOY SAUCE
Code : SS004A, SS4C
Packing : 18.9 Litres, 3.79 Litres



USUKUCHI (LIGHT) SOY SAUCE
Code : SS006, SS006B
Packing : 1 Litre, 20 Litre



YAMASA SOY SAUCE
Code : SS005, SS004B
Packing : 1 Kg, 18 Litre



KIKKOMAN SOY SAUCE
Code : SS005A
Packing : 1 Litre



KIKKOMAN SOY SAUCE
Code : SS004C
Packing : 3.79 Litre



MAYONNAISE
Code : SS012, SS012A
Packing : 500 GMS, 1Kg



RICE VINEGAR
Code : SS013, SS077
Packing : 900 ML, 20 Litres



SUSHI VINEGAR
Code : SS014, SS014B
Packing : 360 ML 1.8 Litre



HONTERI MIRIN
Code : SS017E, SS017F
Packing : 1 Litre, 20 Litre



SESAME OIL
Code : SS020B,
Packing : 300 ML,



SESAME OIL
Code : SS20,
Packing : 1.56 Kg (1.70 Litre)



SESAME OIL
Code : SS021A
Packing : 6.5 Kg (18 Litres)



PONZU (CITRUS VINEGAR)
Code : SS016
Packing : 1.8 Litre



YUZU NO SUI (CITRON JUICE)
Code : SS016A
Packing : 1.8 Litre



KARASHI KO (MUSTARD POWDER)
Code : SS025
Packing : 400 GMS



WASABI POWDER (HORSERADISH POWDER)
Code : SS027B, SS026
Packing : 1 KG, 200 GMS



TONKATSU SAUCE (FRUIT & VEG SAUCE)
Code : SS0008
Packing :



WASABI PASTE
Code : SS026A
Packing : 43 GMS



SHICHIMI TOUGARASHI (CHILLI PEPPER)
Code : SS022, SS022B
Packing : 15 GMS, 1 Kg



YUSUKOSHO (CITRON SPICE)
Code : SS022C
Packing : 60 GMS



HONDASHI POWDER
Code : SS037A, SS037
Packing : 1 KG, 150 GMS



DASHINO MOTO
Code : SS063B, SS063A
Packing : 1 Kg, 150 GMS



CHILLI OIL
Code : SS054B
Packing : 185 ml



LAYU (CHILLI OIL)
Code : SS054
Packing : 33 ML



TOBANJAN
Code : SS054A
Packing : 225 GMS



PANKO (BREAD CRUMBS)
Code : SS040C, SS040, SS040B
Packing : 400 GMS, 1 Kg, 500 GMS



PANKO
Code : SS041
Packing : 20 LBS. (9.07 Kg)



TEMPURA POWDER
Code : SS042B, SS042D
Packing : 700 GMS, 500 GMS



KIMUCHI PASTE
Code : SS047
Packing : 190 GMS



WAFU - DRESSING YUZU
Code : SS68
Packing : 150 ml



KATAKURIKO (POTATO STARCH)
Code : SS045A
Packing : 340 GMS



GOLDEN CURRY HOT
Code : SS029B, SS030B MED. HOT & SS031B - MILD
Packing : 240 GMS



YAKISOBA SAUCE
Code : SS060B
Packing : 2.2 KG



TSUYUNOMOTO
Code : SS059
Packing : 600 ML



YAKITORI NO TARE (YAKITORI SAUCE)
Code : SS060D
Packing : 240 GMS



MOMIJI OROSHI (CHILLY & RADISH SAUCE)
Code : SS79A
Packing : 150 Gms



OGONO NO AJI CHUKKARA (BARBECUE SAUCE)
Code : SS094A
Packing : 1.56 KG



TAMARI SHOYU (SOY SAUCE FOR SASHIMI)
Code : SS023
Packing : 1.8 Litre



TERIYAKI SAUCE
Code : SS060
Packing : 2.25 Kg



ROASTED SESAME SEED
Code : SS081B, SS082B (White)
Packing : 1 KG, 1 KG



JOHAKUTO (REFINED SUGAR)
Code : SS101
Packing : 1 KG



HANAKATSUO UME (BONITO FLAKES)
Code : SS118
Packing : 500 GMS



KAMABOKO RED
Code : FR001A, FR002B (White)
Packing : 120 GMS, 120 GMS



HOTATE KAIBASHIRA (SCALLOPS)
Code : FR015
Packing : 1 KG



TAKO (BOILED OCTOPUS)
Code : FR016
Packing : 1 KG



SHISHAMO
Code : FR018
Packing : 85 GMS



SHIME SABA
Code : FR020A
Packing : 130 GMS



ASARI (BABY SCLAM)
Code : FR026
Packing : 500 GMS



HOKI GAI (SURF CLAM)
Code : FR056
Packing : 1 KG



UNAGI KABAYAKI (BROILED EEL)
Code : FR027
Packing : 250 GMS



ANAGO KABAYAKI (BROILED ANAGO)
Code : FR028
Packing : 120 GMS



HIKIWARI NATTO
Code : FR030B
Packing : 2 X 50 GMS



MINI NATTO
Code : FR030E
Packing : 3 X 50 GMS



EDAMAME (GREEN SOY BEANS)
Code : FR031A
Packing : 500 GMS



HONBA SANUKI UDON (FRESH NOODLE)
Code : FR063A, FR063C, FR063
Packing : 5 X 250 GMS, 600 GMS, 250 GMS



NAMA YAKISOBA (FRESH FRIED NOODLE)
Code : FR038
Packing : 450 GMS



SHOYU RAMEN (FRESH NOODLE)
Code : FR040B, FR041B (Miso Ramen)
Packing : 550 GMS, 550 GMS



GYOZA NO KAWA (GYOZA SKIN)
Code : FR034A
Packing : 140 GMS



WANTAN NO KAWA (WANTAN SKIN)
Code : FR042
Packing : 140 GMS



SATSUMAGE (FRIED FISH PASTE)
Code : FR065
Packing : 170 GMS



SANMA HIRAKY (PIKE)
Code : FR069
Packing : 130 Gms



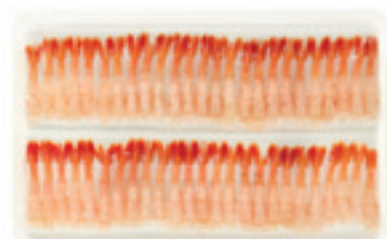
HAMACHI FILLET (YELLOW TAIL FISH)
Code : FR061C
Packing : 1.25 KG (Approx)



BANNOU IKA (FROZEN CUT SQUID)
Code : FR046A
Packing : 700 GMS



SUSHI EBI 4L (SUSHI SHRIMP)
Code : FR064
Packing : 30 pcs pack



AMAEBI (SWEET SHRIMP)
Code : FR064A
Packing : 200 GMS (50 pcs)



NOBASHI EBI (TEMPURA PRAWNS)
Code : FR064B
Packing : 4L 12 pcs pack



FROZEN SABA MACKEREL

Code : FR057A
Packing : 10 KG BOX



SANMA (MAKERAL PIKE)

Code : FR055B
Packing : 10 KG BOX (60 - 80 Pcs / Box)



KAKI (OYSTER)

Code : FR067
Packing : 1 KG



TOBIKKO ORANGE (FLYING FISH ROE)

Code : FR090A, FR090B (GREEN), FR090 (BLACK)
Packing : 500 GMS



IKURA (SALMON ROE)

Code : FR095
Packing : 100 GMS



MASAGO (CAPELINE ROE)

Code : FR089
Packing : 500 GMS



KANI KAMABOKO (CRAB STICK)

Code : FR080
Packing : 500 GMS

AGSS



BOTAN RICE

Code : BR001, BR002, BR003
 Packing : 50 LBS. (22.68 Kg), 10 LBS (4.54 Kg), 20 LBS (9.07 Kg)



GINSHARI PREMIUM RICE

Code : GR001, GR003
 Packing : 20 Kg, 10 Kg



GINSHARI CARLROSE RICE

Code : GR011, GR013
 Packing : 20 Kg, 10 Kg



HANASHOBU RICE

Code : HS001
 Packing : 50 LBS. (22.68 Kg)



NISHIKI RICE

Code : NR004, NR002
 Packing : 50 LBS. (22.68 Kg), 10 LBS (4.54 Kg)



JAPONICA RICE

Code : JP004
 Packing : 5 LBS. (2.27 Kg)

AGSS



MOCHI GOME (SWEET RICE)

Code : CR008A
 Packing : 5 LBS. (2.27 Kg)



TEMPURA PAPER
Code : KW010
Packing : 500 SHEETS PACK



BARAN (DECORATION FOR SUSHI)
Code : KW011
Packing : 1000 Pcs Pack



BARAN (DECORATION FOR SUSHI)
Code : KW011A
Packing : 1 X 1000SPACK



SUSHI MAT
Code : KW009
Packing : 27 X 27 CMS



RIKYU WARIBASHI (WOODEN CHOPSTICKS)
Code : DR021
Packing : 100 Pairs Pack



TENSOGI WARIBASHI (WOODEN CHOPSTICKS)
Code : DR021C
Packing : 100 Pairs Pack



CHOPSTICKS MULTI COLOUR
Code : DR28
Packing : 5 Pairs Pack



BLACK CHOPSTICKS
Code : DR029
Packing : 5 Pairs Pack



BAMBOO CHOPSTICKS
Code : DR019
Packing : 5 Pairs Pack

AGSS